

MARITIME EXCHANGE

for the Delaware River and Bay

www.mxops.org

Leading the Way to Port Progress

(215) 925-1524 ~ ops@mxops.org



AIS

AUTOMATIC IDENTIFICATION SYSTEM

Real-time positions of commercial cargo vessels and tugs/barges transiting the Delaware River and Bay and the C&D Canal

*DESIGNED BY
MARITIME PROFESSIONALS
FOR MARITIME PROFESSIONALS*





COMPREHENSIVE TRACKING OF COMMERCIAL VESSELS ON THE DELAWARE RIVER AND BAY AND THE C&D CANAL

INTEGRATION WITH MARITIME ON-LINE PROVIDES A COMPREHENSIVE VESSEL AND CARGO OPERATING PICTURE

AUTOMATIC IDENTIFICATION SYSTEM

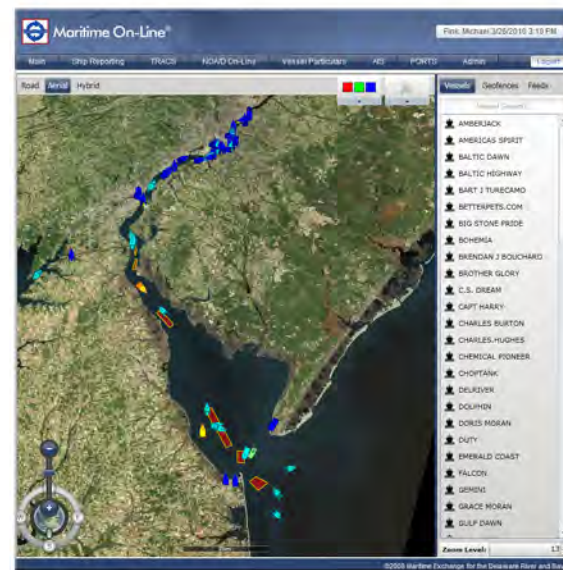


AIS, when used in conjunction with the other Maritime On-Line modules, provides members and subscribers with a comprehensive and common picture of Delaware River maritime operations

-  Vessels equipped with AIS transponders continually transmit real-time position, course, speed and other relevant data via dedicated VHF frequencies which is captured by the Maritime Exchange
-  The system displays real-time positions of commercial cargo vessels and tugs/barges transiting the Delaware River and Bay and the C&D Canal through a secure and user-friendly web site
-  Access to real-time vessel position information significantly improves vessel and cargo operations and as well as dramatically enhances maritime domain awareness.
-  AIS was developed to complement the vessel schedules, cargo manifest data, and advanced arrival/departure information included in Maritime On-Line

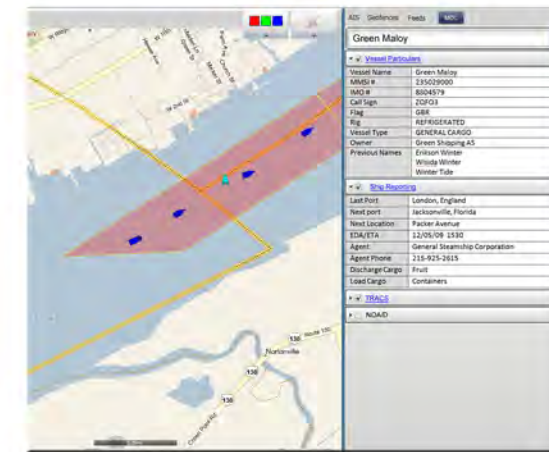
AIS was developed and is maintained by maritime professionals who understand the business.

- ◆ Full AIS coverage includes easy to navigate maps of Delaware River and Bay and C&D Canal
- ◆ AIS is fully integrated with the other modules of Maritime On-Line to provide vessel, cargo and crew data
- ◆ AIS maps and other display options are presented in layers providing full user control to customize the interface
- ◆ Intuitive interface and controls allows users to quickly access data with little to no training



USER CONTROLLED DISPLAY

- ◆ Change map display to show street view, satellite view, or both
- ◆ Quickly locate vessels via a searchable list of all vessels currently in view or filter by vessel type
- ◆ Identify vessel speed and type through color codes shapes
- ◆ Display latitude/longitude grid and coordinates and distance measurement
- ◆ Overlay optional NOAA nautical chart display

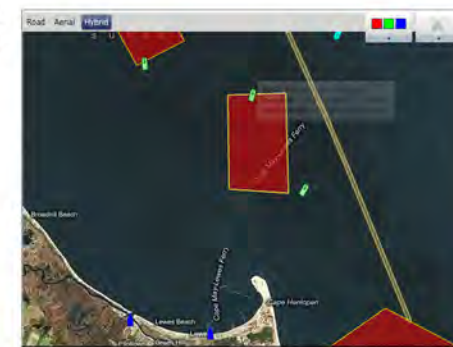


FULL MARITIME ON-LINE INTEGRATION

- ◆ Display summary of Ship Reporting, TRACS NOA/D and Vessel Particulars information directly in AIS
- ◆ Navigate directly to other Maritime On-Line modules to access the full vessel, cargo, and crew list detail for targets
- ◆ Full system security ensures that Maritime On-Line data is available to those with a right to the information

GEOFENCE ALERTS AND HISTORICAL ANALYSIS

- ◆ Create logical zones which generate an email when a target enters/exists the zone
- ◆ Display vessel tracks to determine a vessel's recent movements
- ◆ Playback vessel movements for a specific region and timeline
- ◆ Generate trend analysis to display vessel traffic patterns for a given period



Contact us today for a personalized tour and to learn how this system can benefit your company.

The Maritime Exchange has been in the business of collecting and disseminating maritime data for over 135 years. We are a maritime trade association intimately familiar with all aspects of the waterborne trade industry – let us put our experience to work for you